

P506 Series - PCD Two or Three Flute Countersink with Pilot

APPLICATION

Hand countersinking of CFRP and Hard Composite/Metallic materials

TOOL GEOMETRY

Two flute or three flute PCD, 0° flute helix

PILOT DIAMETER RANGE

.0781 – .7500"

COUNTERSINK

DIAMETER RANGE

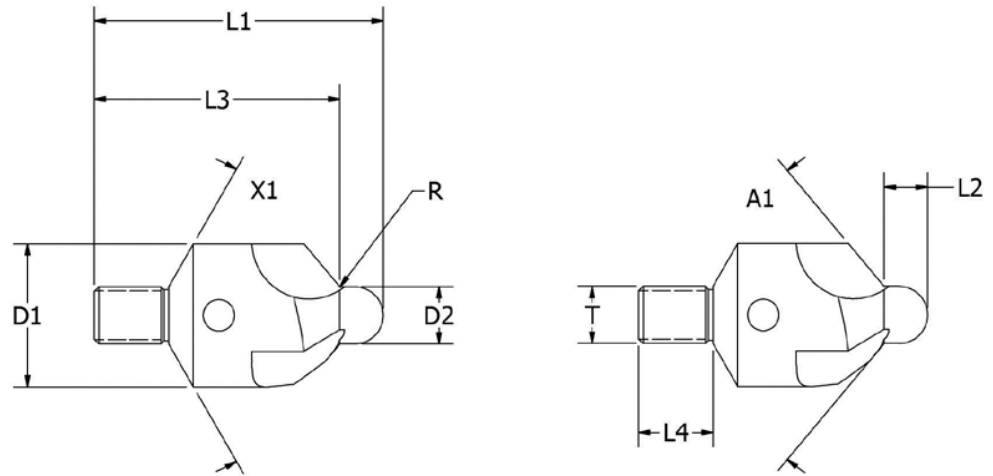
1/4" – 1-1/8"
Available for 100° and 130° countersinking

TOOL MATERIAL

HSS body with PCD cutting edges

OD TOLERANCE

D2: +0" / - .0016"



P507 Series - PCD Two or Three Flute Countersink w/ Interchangeable Pilot

APPLICATION

Hand countersinking of CFRP and Hard Composite/Metallic materials

TOOL GEOMETRY

Two flute or three flute PCD, 0° flute helix

PILOT DIAMETER RANGE

.0781 – .7500"

COUNTERSINK

DIAMETER RANGE

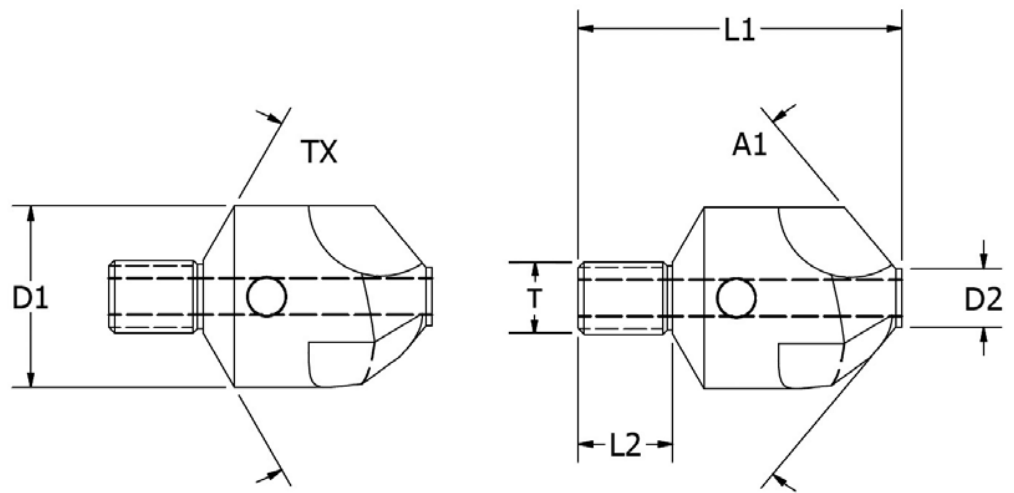
1/4" – 1-1/8"
Available for 100° and 130° countersinking

TOOL MATERIAL

HSS body with PCD cutting edges

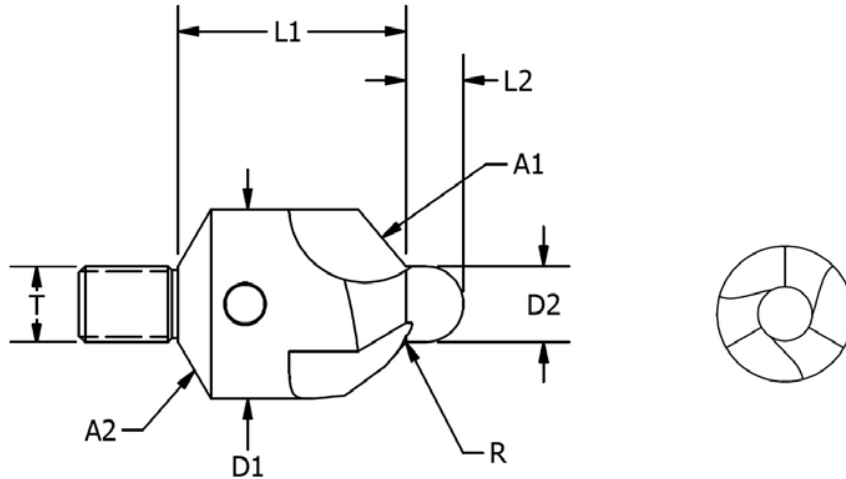
OD TOLERANCE

D2: +0" / - .0016"



PCD AND CARBIDE COUNTERSINKS

D100 Series - Carbide Piloted 100° Countersink



APPLICATION

Piloted countersink for use with microstop cage

TOOL GEOMETRY

Three flute, carbide body with HSS threaded shank

TOOL MATERIAL

Solid carbide

OD TOLERANCES

D1: +0" / - .010"

D2: +0" / - .001"

Countersink Diameter	Pilot Diameter	Body Length	Pilot Length	Fillet Radius	Countersink Angle	Seat Angle	Thread Shank Size	Number of Flutes	Part ID
D1	D2	L1	L2	R	A1	A2	T		
0.3750	0.0980	0.750	0.188	0.010	100°	120°	1/4-28	3	D100-11235
0.3750	0.1285	0.750	0.188	0.010	100°	120°	1/4-28	3	D100-11236
0.3750	0.1590	0.750	0.188	0.010	100°	120°	1/4-28	3	D100-11237
0.3750	0.1610	0.750	0.188	0.010	100°	120°	1/4-28	3	D100-11238
0.3750	0.1935	0.750	0.188	0.010	100°	120°	1/4-28	3	D100-11239
0.5000	0.0980	0.750	0.188	0.010	100°	120°	1/4-28	3	D100-11240
0.5000	0.1250	0.750	0.188	0.010	100°	120°	1/4-28	3	D100-11241
0.5000	0.1285	0.750	0.188	0.010	100°	120°	1/4-28	3	D100-11242
0.5000	0.1590	0.750	0.188	0.010	100°	120°	1/4-28	3	D100-11243
0.5000	0.1610	0.750	0.188	0.010	100°	120°	1/4-28	3	D100-11244
0.5000	0.1850	0.750	0.188	0.010	100°	120°	1/4-28	3	D100-11245
0.5000	0.1875	0.750	0.188	0.010	100°	120°	1/4-28	3	D100-11246
0.5000	0.1935	0.750	0.188	0.010	100°	120°	1/4-28	3	D100-11247
0.5000	0.2460	0.750	0.250	0.010	100°	120°	1/4-28	3	D100-11248
0.5000	0.2500	0.750	0.250	0.010	100°	120°	1/4-28	3	D100-11249